

Link do produktu: <https://www.illuminations.pl/pl1-milight-0110v-dimming-driver-40w-p-2326.html>

40W 0/1-10V Dimming Driver



PL1 - MILIGHT - 0/1~10V Dimming Driver 40W

Cena	99,00 zł
Dostępność	Dostępny
Czas wysyłki	14 dni
Numer katalogowy	2326
Producent	Mi.Light

Opis produktu

Product Name: 40W 0/1~10V Dimming Driver
 Model No.: PL1
 Input Voltage: AC180~240V 50/60Hz
 Output Voltage: DC30-40V
 Output Current (Constant Current): 900mA
 Output Power (Max): 40W
 PF: >0.9
 Dimming Range: 0-100%
 Remote Control Distance: 30m
 ta: 50°C
 tc: 85°C

40W 0/1-10V Dimming Driver

Control the lighting brightness by connecting 1~10V or 0~10V signal or 2.4GHz remote or APP





Dimmable
(1~100%)



Adjust the brightness
through 0/1-10V dimmer



2.4GHz RF
Remote control



Smart phone
APP control



Auto-transmitting
function

0/1~10V Dimming panel

Dimming the 1~100% brightness by connecting 0/1~10V dimming panel



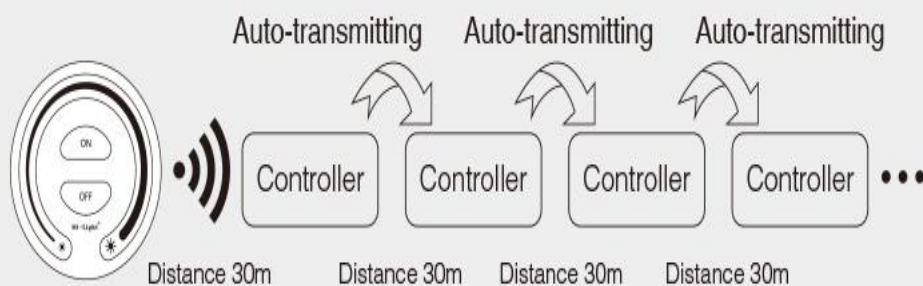
2.4GHz remote control and Smartphone APP control

Fulfill more controlling by Remote or smartphone
*Need WiFi iBox for smartphone control



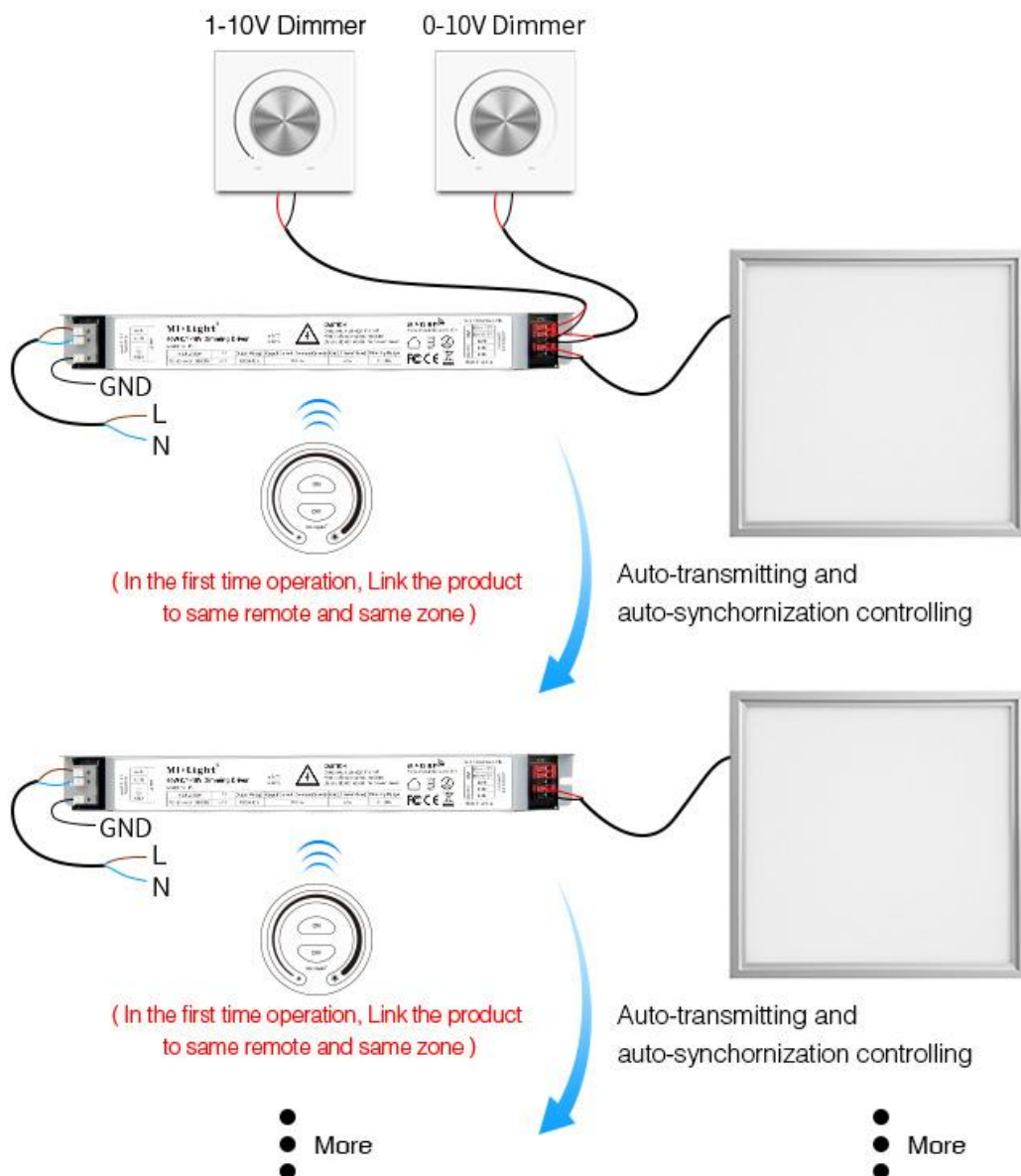
Auto-transmitting function

One 40W 0/1~10V Dimming Driver can transmit the signals from the remote control to another 40W 0/1~10V Dimming Driver within 30m, as long as there is a 40W 0/1~10V Dimming Driver within 30m, the remote control distance can be limitless.



You can control many controllers at the same time by 0/1-10V Dimming Panel

In the first time operation, when you use one remote to link the product, you can control many controllers directly by 0/1~10V dimming panel without the controlling from the linked remote.



Note: If you need the 0/1~10V dimming panel to control many controllers at the same time, you must use same remote and same zone to link the controller. Controller just transmit the signal from the first time operation linked by remote (The signal is first signal); if you want to change, you need to unlink the first signal, then use another remote to link it (this signal is the first signal from remote), so when you want to change, please unlink the first signal, then link to another.

Product details

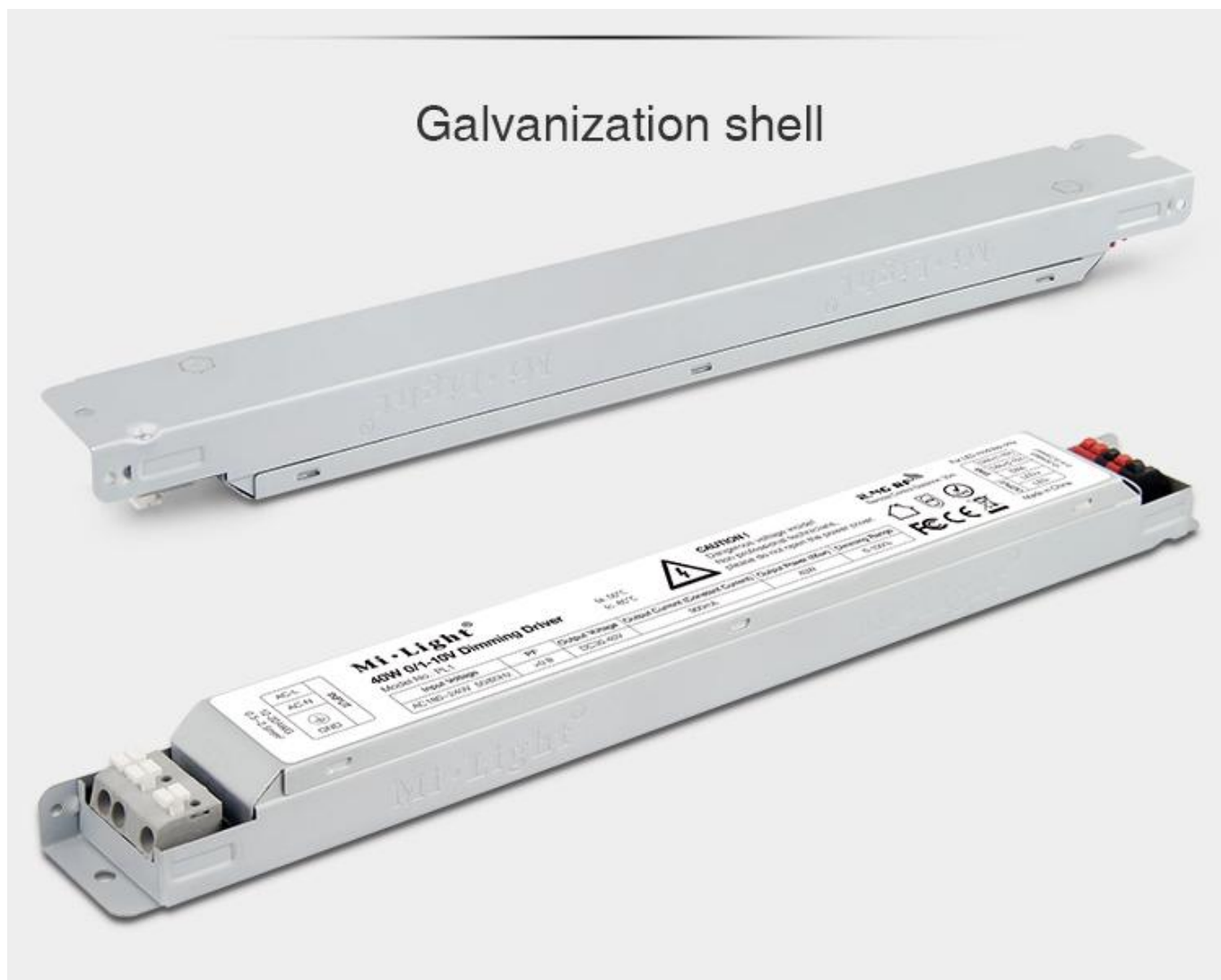
Input terminal



Output terminal

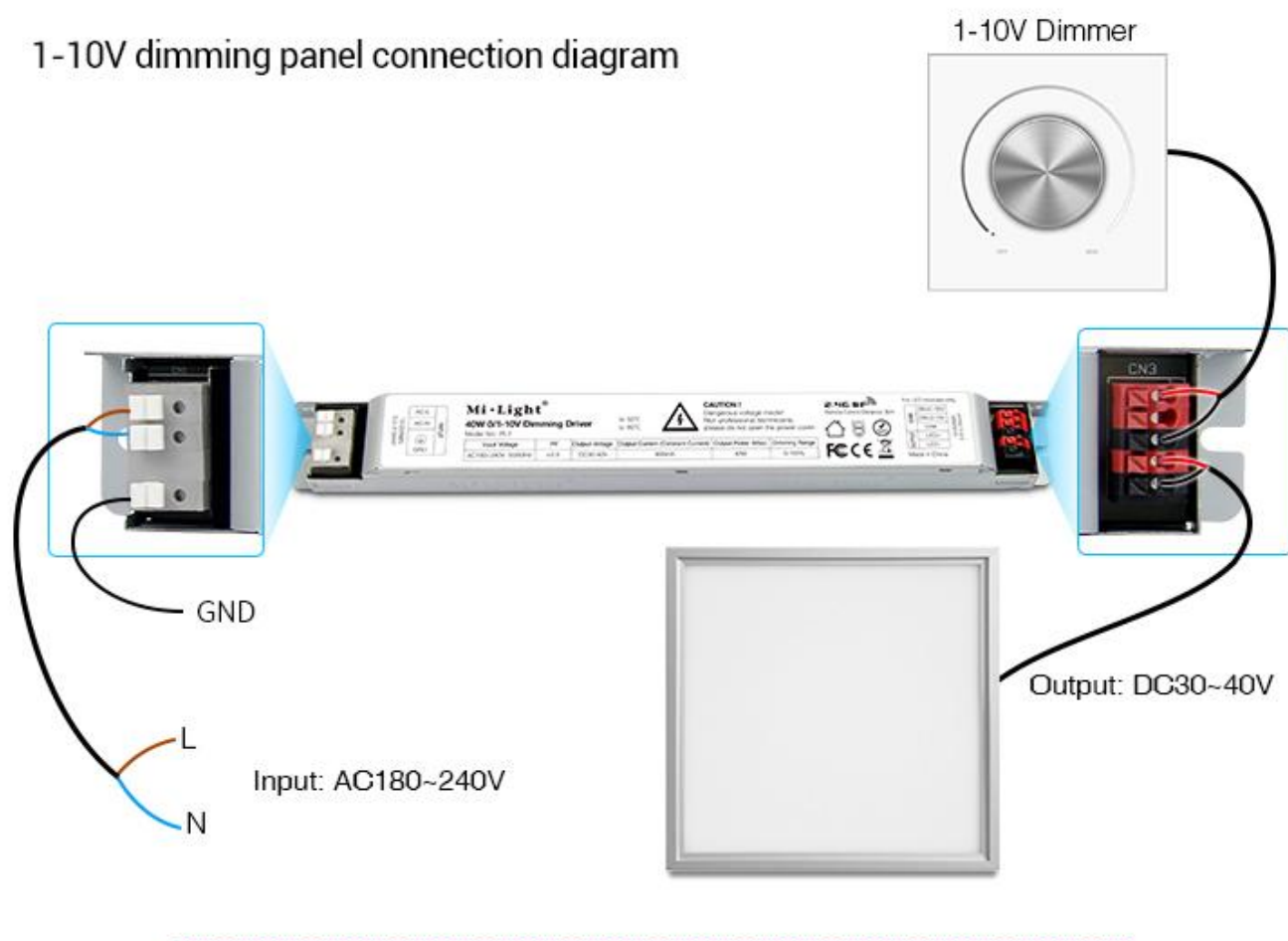


Galvanization shell



Installation Diagram

1-10V dimming panel connection diagram



0-10V dimming panel connection diagram

